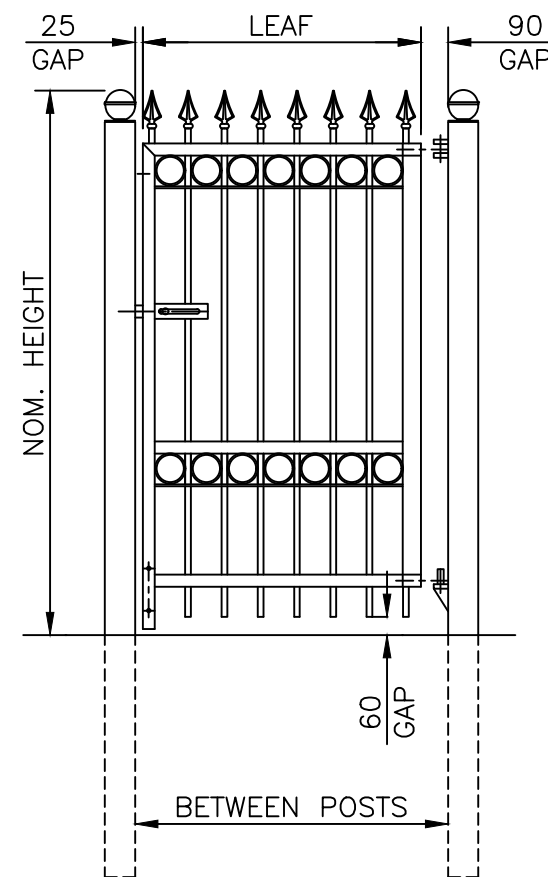
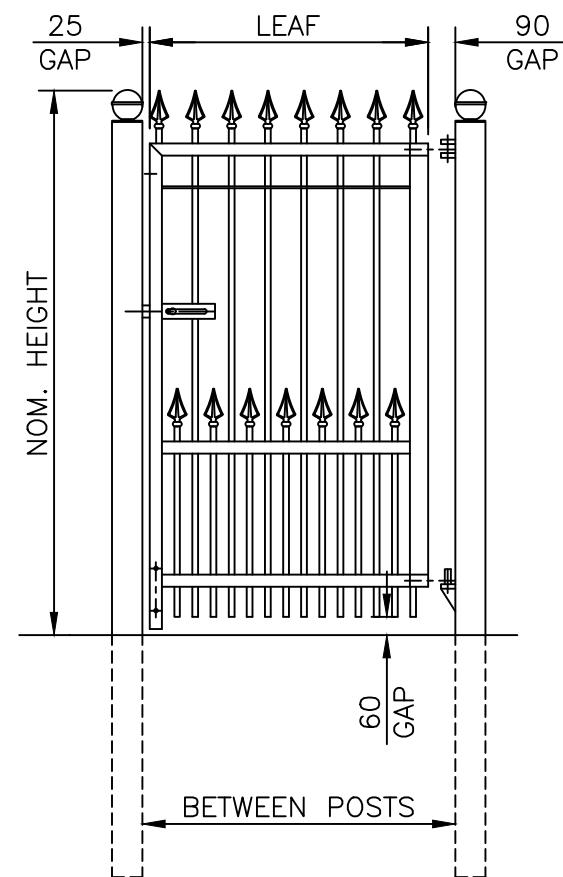
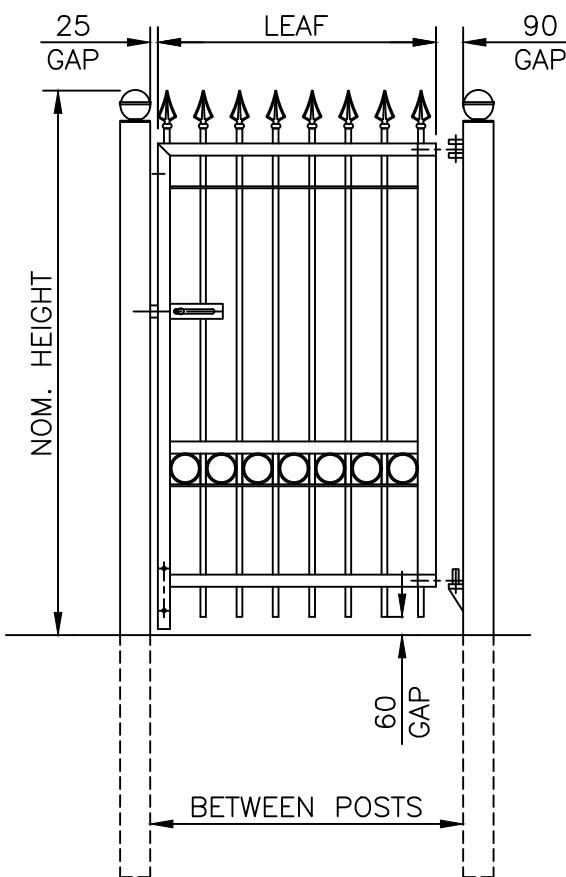
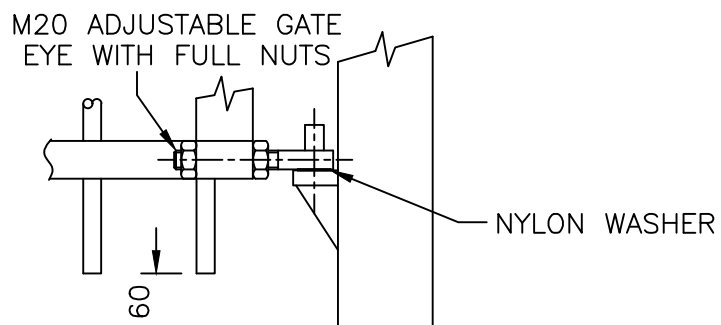
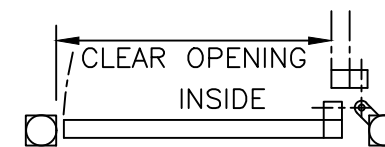
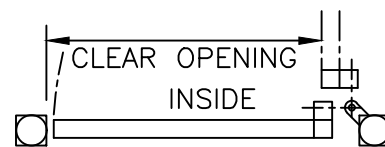
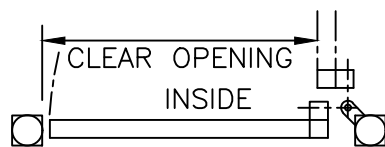
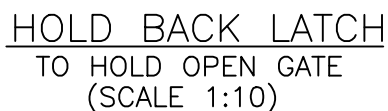


GATES SECURED USING PADLOCKABLE SLIDE LATCH (PADLOCK NOT SUPPLIED) FOR OPTIONAL KEY LOCK REFER TO DRAWING J1/02111 FOR DETAILS.



ORNAMENTAL LEVEL TOP SINGLE GATES

BOTTOM HINGE DETAIL (SCALE 1:8)

SINGLE GATE SIZES

NOMINAL WIDTH	BETWEEN POSTS	CLEAR OPENING	LEAF WIDTH	HANG POST
1m	1035	885	920	100 x 100 SHS
-	1155	1005	1040	
1.25m	1275	1125	1160	
-	1395	1245	1280	
1.5m	1515	1365	1400	
-	1635	1485	1520	
1.75m	1755	1605	1640	150 x 150
-	1875	1725	1760	
2m	1995	1845	1880	
-	2115	1965	2000	
2.25m	2235	2085	2120	
-	2355	2205	2240	
2.5m	2475	2325	2360	150 x 150
-	2595	2445	2480	
2.75m	2715	2565	2600	
-	2835	2685	2720	
3m	2955	2805	2840	

STANDARD HEIGHTS.
1m, 1.2m, 1.5m, 1.8m, 2m & 2.5m

NOTES.
ALL DIMENSIONS ARE IN mm (UNO)
GAPS UNDER GATES & FENCING ARE NOMINAL DUE TO GROUND LEVELS.

MATERIALS.
HANG POST: TYPICALLY AS TABLE (ASSESSED TO SUIT SITE LOCATION)
SLAM POST: 100 x 100 SHS
GATE RAILS: 60 x 40 RHS & 60 x 6 MS FLAT
SLAM STILE: 60 x 40 RHS
HANG STILE: 60 x 60 SHS
PALES: ø19 CHS
RINGS: ø100
FINIALS: 'SAXON' ARROWHEAD
FINISH.
GALVANISED TO BS EN ISO 1461
POWDER COATED: IF REQUESTED

DO NOT SCALE - IF IN DOUBT ASK

- 2 25/03/2020 NEW BORDER - LATCH - NOTES
- 1 08/03/18 FINIAL UPDATES
- 0 06/06/2011 Original Issue

Drawn EE	TITLE SALES & INSTALLATION DRAWING ORNAMENTAL SINGLE GATES
Date 06/06/2011	
Checked CJ	CUSTOMER
Size A3	Scale 1:25 U.O.S.
ACK No.	
Drawing No. ORN\2025	



Stowting Common, Near Ashford, Kent. TN25 6BN
Telephone: 01233 750393
Fax: 01233 750403
www.jacksons-fencing.co.uk
www.jacksons-security.co.uk

This Drawing Is The Property Of H.S. Jackson & Son (Fencing) Ltd, And May Not Be Copied Or Reproduced In Any Way Without Prior Written Permission.